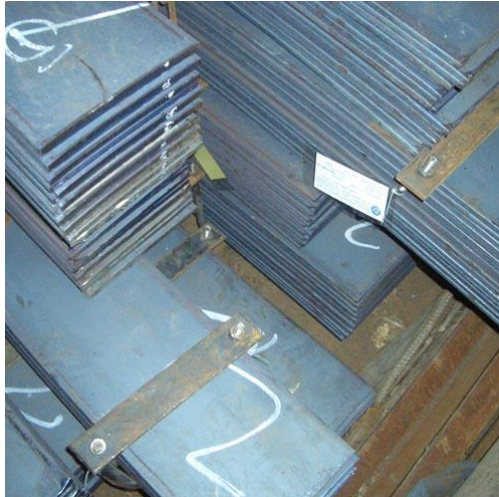


Flat Steel Bar

Flat, refers to the width 12-300mm, thickness 3-60mm, cross section is rectangular in shape and with a blunt edge of steel. The flat steel can be the finished steel, the blank of the welded pipe and the thin slab for the laminated sheet.



Main uses of the Flat Steel Bar:

the flat steel, as a timber, can be used to make hoop iron, tools and mechanical parts. It is used as a frame structure and a escalator in the building. The flat steel is rolled with negative deviation, but it is delivered according to the actual weight, and the utilization ratio is 1~5 percentage points higher than that of the steel plate. Flat steel can be made according to user needs, thickness, width and fixed length production. It reduces cutting and reduces labor and material consumption for users, and reduces raw material processing loss, saving time, labor and material saving. The products have been used in the steel structure manufacturing industry, the machinery manufacturing industry, the automobile industry, the mining machinery, the lifting machinery and other industrial materials.

Specification of Flat Steel Bar

Standard	Type	Steel Grade
JIS	Carbon Structural Steel	SS400, S10C, S20C, S35C, S45C, S50C
	Alloy Structural Steel	SCr420, SCr440, SCM440, YAW-TEN50
ASTM	Carbon Structural Steel	1010, 1020, 1035, 1045, 1050
	Alloy Structural Steel	5120, 5140, 4140, 8620H, 4130
DIN	Carbon Structural Steel	St37-2, C10E, C22E, C35E, C45E, C50E,
	Alloy Structural Steel	17Cr3, 41Cr4, 42CrMo4, 10CrMo9-10
GB	Carbon Structural Steel	Q235, 10, 20, 35, 45, 50
	Alloy Structural Steel	20Cr, 40Cr, 35CrMo, 42CrMo, 38CrMoAl, 20CrMnTi,
		20CrNiMo, 40CrNiMo, 30CrMnTi, 12Cr1MoV, 20CrMnMo,
		H13, 30CrMnSi, 30CrNiMo,